

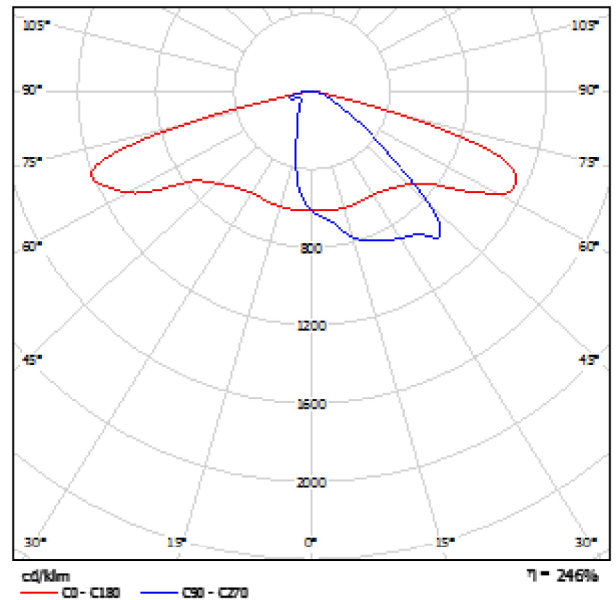


Operator  
Telephone  
Fax  
e-Mail

## RoadSpark SLIM 40W / Luminaire Data Sheet

Luminous emittance 1:

See our luminaire catalog for an image of the luminaire.



Luminaire classification according to CIE: 100  
CIE flux code: 35 68 94 100 248

Due to missing symmetry properties, no UGR table can be displayed for this luminaire.



Operator  
Telephone  
Fax  
e-Mail

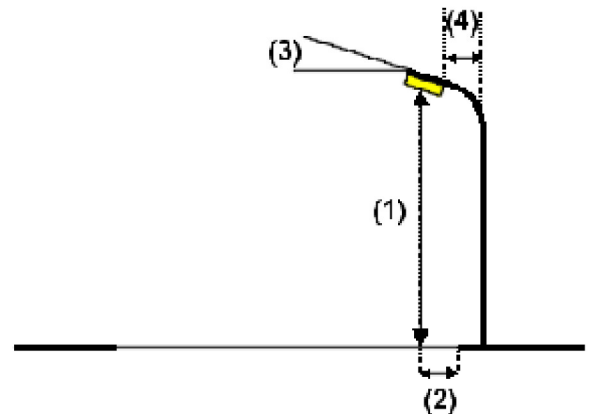
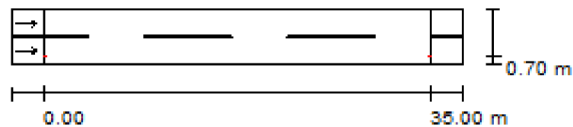
## Priezu iela / Planning data

### Street Profile

Roadway 1 (Width: 5.000 m, Number of lanes: 2, tarmac: R3, q0: 0.070)

Maintenance factor: 0.85

### Luminaire Arrangements



Luminaire:	RoadSpark SLIM 40W
Luminous flux (Luminaire):	4098 lm
Luminous flux (Lamps):	1668 lm
Luminaire Wattage:	40.0 W
Arrangement:	Single row, bottom
Pole Distance:	35.000 m
Mounting Height (1):	7.000 m
Height:	7.000 m
Overhang (2):	0.700 m
Boom Angle (3):	5.0 °
Boom Length (4):	1.000 m

#### Maximum luminous intensities

at 70°:	1400 cd/klm
at 80°:	526 cd/klm
at 90°:	53 cd/klm

Any direction forming the specified angle from the downward vertical, with the luminaire installed for use.

No luminous intensities above 95°.

Arrangement complies with glare index class D.2.

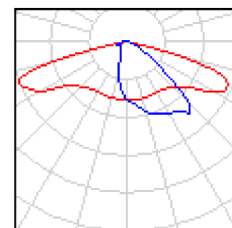


Operator  
Telephone  
Fax  
e-Mail

## Priezu iela / Luminaire parts list

RoadSpark SLIM 40W  
Article No.:  
Luminous flux (Luminaire): 4098 lm  
Luminous flux (Lamps): 1668 lm  
Luminaire Wattage: 40.0 W  
Luminaire classification according to CIE: 100  
CIE flux code: 35 68 94 100 248  
Fitting: 1 x Cree XP-G (Correction Factor 1.000).

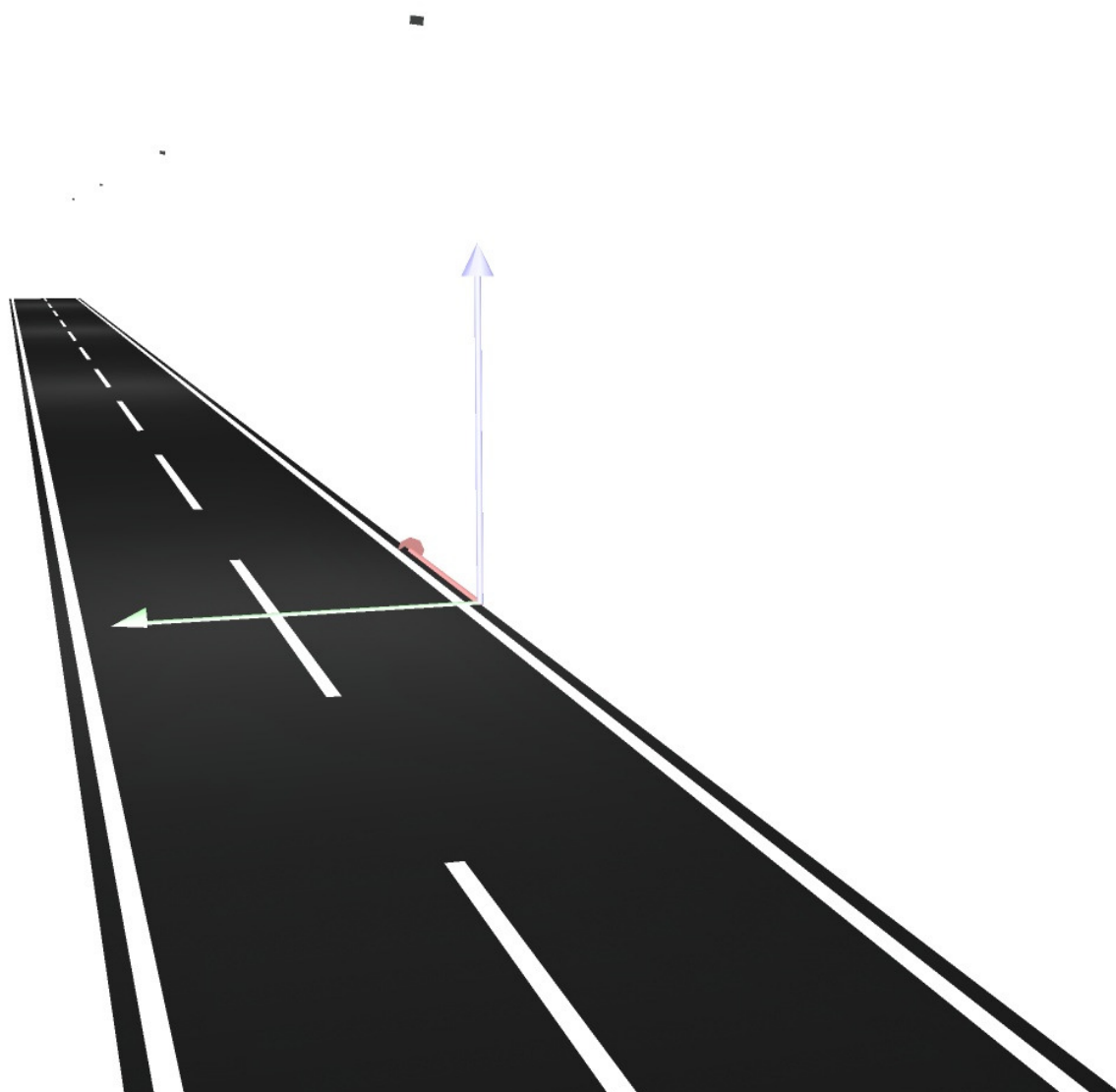
See our luminaire  
catalog for an image of  
the luminaire.





Operator  
Telephone  
Fax  
e-Mail

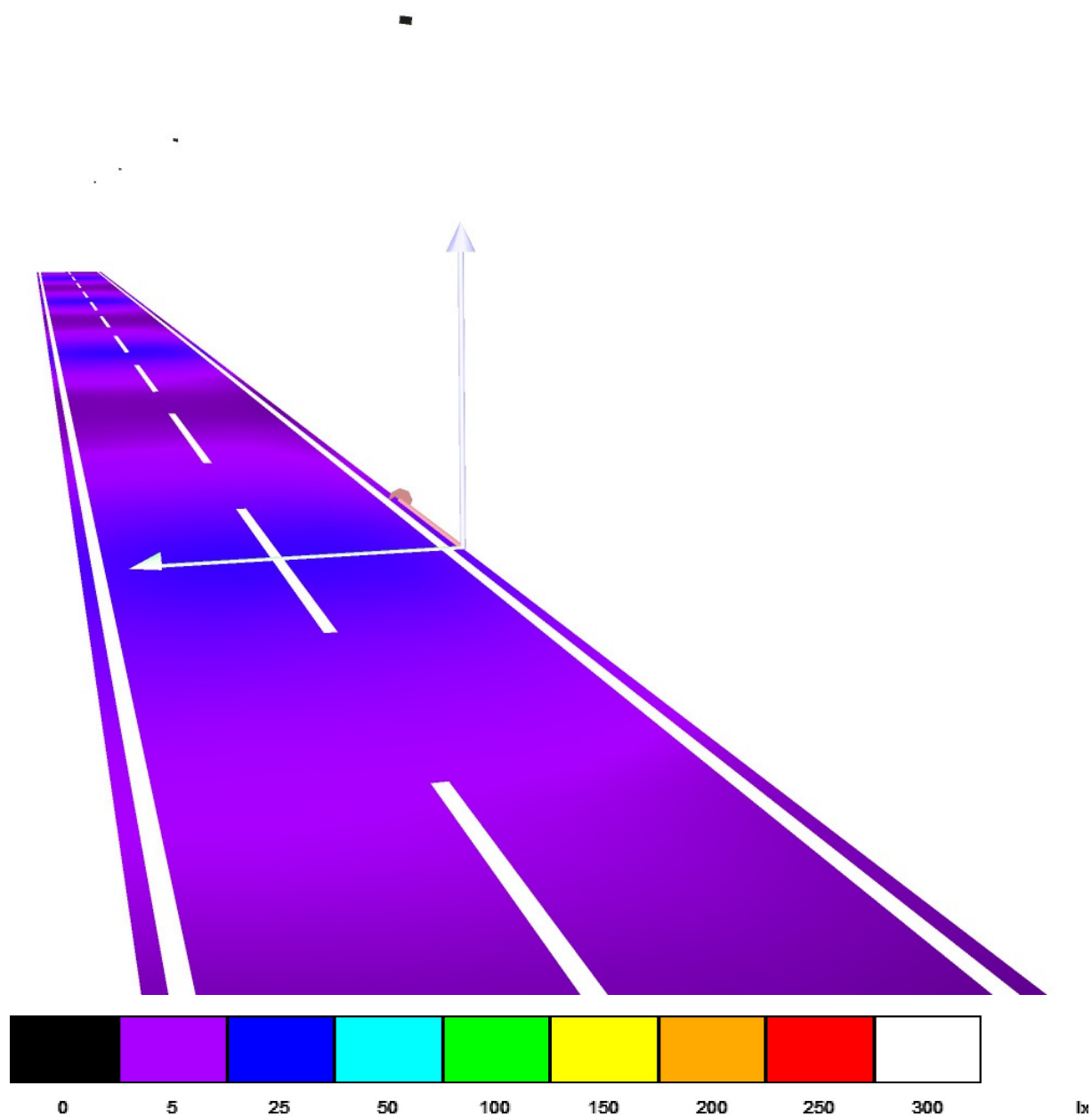
## Priezu iela / 3D Rendering





Operator  
Telephone  
Fax  
e-Mail

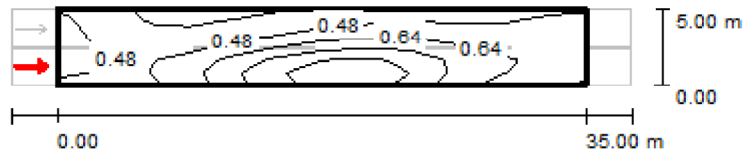
## Priezu iela / False Colour Rendering





Operator  
Telephone  
Fax  
e-Mail

### Priezu iela / Valuation Field Roadway 1 / Observer 1 / Isolines (L)



Values in Candela/m<sup>2</sup>, Scale 1 : 500

Grid: 12 x 6 Points

Observer Position: (-60.000 m, 1.250 m, 1.500 m)

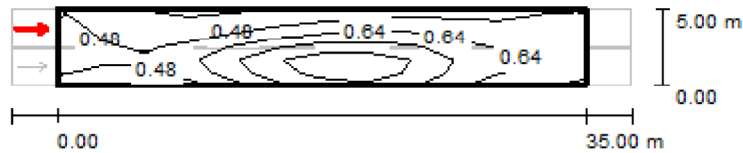
tarmac: R3, q0: 0.070

	$L_{av}$ [cd/m <sup>2</sup> ]	U0	UI	TI [%]
Calculated values:	0.59	0.46	0.43	15
Required values according to class ME6:	≥ 0.30	≥ 0.35	≥ 0.40	≤ 15
Fulfilled/Not fulfilled:	✓	✓	✓	✓



Operator  
Telephone  
Fax  
e-Mail

## Priezu iela / Valuation Field Roadway 1 / Observer 2 / Isolines (L)



Values in Candela/m<sup>2</sup>, Scale 1 : 500

Grid: 12 x 6 Points

Observer Position: (-60.000 m, 3.750 m, 1.500 m)

tarmac: R3, q0: 0.070

	$L_{av}$ [cd/m <sup>2</sup> ]	U0	UI	TI [%]
Calculated values:	0.62	0.49	0.54	12
Required values according to class ME6:	$\geq 0.30$	$\geq 0.35$	$\geq 0.40$	$\leq 15$
Fulfilled/Not fulfilled:	✓	✓	✓	✓